

In this Issue :

- ♦ Meet our Team
- ♦ Under Construction
- ♦ Coming Soon
- ♦ Engineered Stone
- ♦ Design Trends 2024

Office: 3/145-147 Victoria Street,
North Geelong, VIC, 3215.

Phone: (03) 5298 3413

e-mail: admin@littleconstructions.com.au

web: www.littleconstructions.com.au

"Country Homes

For Country People"

MEET OUR TEAM

LITTLE
constructions
DESIGN AND CONSTRUCT



Name: Jonathan Waghorn

Job: Draftsperson/Building Designer

Where are you from: I was born in Canberra! I grew up in the leafy suburbs of Duffy.

Significant Other: I live with my partner Johanna.

Kids: We don't have kids just yet. However, we do have two dogs. Chillie who is a red heeler and Zen the Hungarian Vizsla. They are essentially our children.

Hobbies: I have spent a large part of my life snowboarding. Washing dishes all over the world to make it possible. Currently I am concentrating on surfing and my new middle age friendly activity-cycling.

First Job: My first job was washing the pans at the local Pizza Hut.

Fave Movie: Old School. Just a very silly movie.

Fave TV Show: Tv is incredible these days. I've just finished the Bear. Took me back to my kitchen days.

Fave Sport: I don't follow football. Or any team sport really. That could be the Canberra in me.

Fave Food: I really enjoy Thai food. Vietnamese would be a close second.

Surprising thing about you: I own a sewing machine.

What do you want to be when you grow up: When I grow up, I want to be a parmesan cheese taster. I'd fly all over the world tasing cheese. Good gig if you can get it.

Best Place to Travel: We are off to Japan in April. I'm looking forward to seeing it in the springtime. Japan is like going to another world.

Best Advice you ever received: This year I'm trying to be "comfortable in the uncomfortable" looking to challenge myself in difficult or uncomfortable situations.

What do you like about working at Little Constructions:

Little constructions is a great place to work because we are all really passionate about building our clients dream homes.



INVERLEIGH Our most recent Handover and showcasing creative design without compromising on function is this modern home located in the *Barrabool Views Estate- Inverleigh*.

Unique in its façade featuring recycled red bricks and contrasting Bellevue Blend Stonework it stands out from the crowd.

The carefully considered floor plan maximizes comfort and style while also capturing the outside views.

Flooded with natural light the home has 3 distinct zones, a spacious master bedroom with ensuite and walk-in robe, an open-plan kitchen/meals/living zone (the heart of the home) that opens out to the oversized alfresco area and the secondary bedrooms wing with huge walk in robes for maximum storage space.

There is also a multi-purpose space that could be a theatre room, rumpus room or kids space.

A modern neutral colour palette adds the finishing touch, ensuring a low maintenance home that will stand the test of time.

All that awaits is for the clients own personal touches.



Under Construction

OCEAN GROVE From country to coast this coastal beauty is moving along nicely.

With lock up now complete and insulation installed this Grand Two Storey Home is really starting to take shape.

Our clients will soon be able to walk through and picture these amazing rooms.

The best parts are still to come with cabinetry and fix out to begin to bring the inside together.

James Hardie Cladding and Render has been used on the facade with a coastal colour scheme to come that will compliment this homes location.

Stayed tuned as this one will be sure to impress.



BATESFORD Our knockdown rebuild in Batesford is really moving along fast. Lucy and Tony were keen to retain the pressed red bricks from the original house having been their childhood home and was also built by Lucy's father in the 1980's.

This meant carefully dismantling the existing brick walls, and thoroughly cleaning each brick to re-use.

The original bricks have also been used as a feature wall around the living room fireplace, whilst also incorporating the bluestone mantle from the original house as the new hearth.

While time consuming to salvage, clean up, and reuse, it provides a fascinating story for Lucy and Tony to share when visitors see the finished result.

Blending seamlessly in its surroundings, and vaguely resembling its original building. It is also a nod to sustainability and the use of recycled materials. We cant wait to see the finished product.



UPCOMING SITE STARTS 2024.....

BANNOCKBURN



LARA



BARRABOOL



"Country Homes For Country People"

What you need to know about engineered stone

As many of you will already know, the Australian Government has unanimously agreed to prohibit the use, supply and manufacture of all engineered stone as of 1 July this year. While installed engineered stone is a completely safe material (there's no need to remove it from your home!), the health risks associated with exposure to silica dust during fabrication have resulted in this decision. But in good news for consumers, and our *Little Construction clients'* our stone manufacturer, Stone Ambassador, have pivoted with the release of engineered stone alternatives including the new Zenith Surfaces and the VASARI porcelain collection.

Zenith Surfaces is a revolutionary new surface that boasts 0% crystalline silica content, maintaining the on-trend aesthetic and superior performance that is demanded from all Stone Ambassador products.

Manufactured with intense heat and immense pressure that binds raw materials, including recycled glass, to create an ultra-compact, non-porous stone surface that is highly durable. It's so hardwearing that it can be used across a variety of applications including benchtops, bathroom vanities, fireplaces and furniture. UV stable, fire-proof and weather-proof, Zenith stone is also ideal for outdoor kitchen and BBQ areas.

The Zenith Collection has a range of 40 stone-inspired surfaces that will be available from March 2024 with 5 price points, with a matte or polished finish and a choice of edge profiles. Veined surfaces offer through-body veining and book matching is available for selected surfaces too.



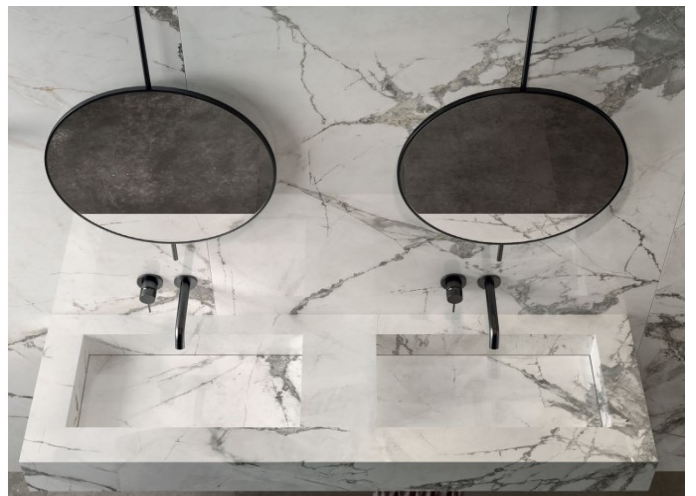
"Country Homes For Country People"

VASARI
italian surfaces

VASARI Porcelain- Available as a stone alternative for a while now, is an exceptionally durable, natural, low silica surface with the ability to replicate anything from marble and granite to sandstone and slate. It's impervious to stains, UV rays, knocks, scrapes, household chemicals and extreme heat which makes it a great choice for outdoor kitchens. Porcelain has long been favored as an alternative to natural stone and it's becoming even more popular in the wake of the ban on high silica engineered stone.

Each slab of Vasari porcelain is ethically produced from natural raw ingredients, including clay, feldspar and oxides. With a 12mm profile and surface dimensions of 1600 x 3200mm, these larger slabs make the achievement of sweeping expanses of joint-free surfaces achievable and the product is also suitable for both indoor and outdoor installations.

Both the above options comply with the Government's new requirements.



HOME DESIGN TRENDS 2024

A new year calls for new inspiration!

Planning a major home building project can lead to decision overwhelm but one great way to narrow down the choices is by taking a look at what's trending. We take a look at four of the top design trends for 2024 and beyond.

1. CURVES

Gone are the days of straight lines and sleek edges. In 2024, *it's all about the curve.*

Curves can be used in home designs in a number of ways. From arched doorways to curved staircases, curved walls, arched windows, curved vanity mirrors, and curved island bench tops.

This trend also extends into soft furnishings, anticipate the rise of curved sofas, wave headboards, and the incorporation of organic shapes

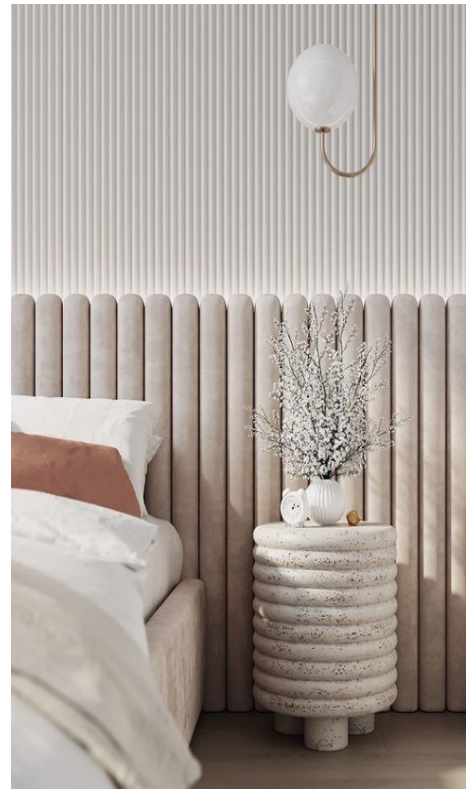


2. FLUTING

Fluting Is Back In Style (& We're Here For It)

Fluting is a classic look in interior design that is enjoying a renaissance in modern home decor. It's a great way to add texture to a room as well as giving a little nod to Art Deco glamour.

The look is now becoming a key feature inside our homes, from kitchen cabinets and kitchen islands, to vanity units, shower doors, sinks and lighting.



STAY CONNECTED.....

JOIN US ON SOCIAL MEDIA FOR REGULAR UPDATES



Little Construction P/L



Little constructions



Little Constructions



<http://www.houzz.com.au/pro/little-constructions/little-constructions>



NEW GREEN BUILDING MATERIALS:
PSEUDO-PLYWOOD MADE FROM GROUND
UP AVOCADO SEEDS MIXED WITH TOFU.

3. MUD-LAUNDRY ROOMS

Combining a laundry room with a mudroom is fast becoming an increasingly popular choice with homeowners.

Used as a stop-gap between the back door and the interior rooms of a home, mudrooms were originally designed to collect messy dirt and muddy boots before it is tracked farther into the home. Also as a dedicated storage space for our outdoor belongings – coats, scarves, umbrellas, and boots with the odd dog lead thrown in!

Mudrooms are also a great place for school bags, shoes and sports gear.

We recommend mudroom storage components like cabinets, hooks and cubbies to help organize all the clean gear. A bench seat is also a great addition for somewhere to sit to put your shoes on.

By incorporating storage, organization, and practical features, a mudroom can greatly enhance the functionality and cleanliness of your home.



4. SMART HOMES

Home owners are increasingly becoming interested in smart homes. “Home automation, touchless doorbells, smart thermostats alongside car-charging equipment, robotic vacuums and smart toilets to name just a few.

Many of us are already familiar with Alexa & Siri and with greater accessibility to AI this will play into almost all areas of our homes. From heating and cooling to electricity and security systems.

As always the Kitchen will see many of these changes, with connected technology such as appliances with pre-programmed settings that automatically adjust cooking times and cooking apps that send cooking instructions straight to the oven.

Next up will be Bathrooms. Digital showers, are becoming increasingly popular with many featuring a smartphone app to offer the user the ultimate customization. Smart showers will also have built in Wi-Fi and Bluetooth to connect to virtual home assistants and control the shower with voice activation.

Smart cameras and smart locks are also fast becoming popular . Security systems can now connect to your Wi-Fi network and are controlled via app or voice. Coupled with a front door smart lock, you can also set time-limited keys for other people, so your house-sitters can use an app on their phone to get in while you're away, or cleaners can get in during certain hours, but not others.

Smart home technology also allows us to have more power over how much energy we use at home. This can also help us better manage the money we spend each month on electricity, heating and water. Smarter for everyone.

“Country Homes For Country People”