

# AUTUMN NEWSLETTER 2023

LITTLE  
**constructions**  
DESIGN AND CONSTRUCT

## IN THIS ISSUE

- Keep an eye out 2
- Highlighted Projects 3-4
- Upcoming / Stay Connected 5
- Onsite with Paul  
Feature Trade profile 6
- Featured Home Design 7
- 2023 design Trends 8



LETHBRIDGE

*“Country Homes  
For  
Country People”*

All Little Constructions newsletters are available  
for download on our website:  
[www.littleconstructions.com.au](http://www.littleconstructions.com.au)

## Get In Touch With The Team

If you're ready to build the acreage home of your dreams, get in touch with the team at Little Constructions today. We're ready to bring your country home to life.

Contact Us

## Keep an eye out at a bus stop near you.....



## Spotted Cruising the streets of Geelong!



*Listen out for our ad on the radio*

Contact us today for a FREE hard copy of our Product Book



Visit our website to request a copy

Or

Get in contact with our friendly team

**Office:** (03) 5298 3413

**New Home enquiries:** 0478 686 985

*'Country Homes For Country People'*



# HIGHLIGHTED PROJECTS...



## ST ALBANS PARK

With handover close by waiting for final connections this two unit development has definitely bought some fresh curb appeal. With a neutral colour scheme inside and out these have a perfect homely feel for anyone wanting easy, comfortable living. Situated in a great location and walking distance to playgrounds, shops and public transport these will be ideal for those not wanting our remote acreage designs.



## GHERANG

With fix out well underway and flooring to be completed soon this house is just as impressive inside as it is out. With a beautiful brick fireplace sitting proud as a main feature to the hub of the home it compliments the kitchen beautifully, which we can't wait to show you on completion. This home will be magnificent throughout any season and will be enjoyed by all for many years to come.



## LARA

Our grande two storey is really starting to take shape. On arrival with it's stunning street appeal, you can't help but stop and take it all in. With the massive job on this façade the feature mouldings are due for completion soon which means scaffold down and into the final stage of Lock up. We can't wait for you to watch the progress on this interior, with a welcoming spacious entry, that leads you to an entertainers delight. This is one to watch!



## TEESDALE

With fit off well underway the colour scheme of this home is coming together nicely. With amazing blackbutt Engineered flooring complemented with a mixture of dark and light cabinetry this home will be a great backdrop for our clients to be adding their own style in no time at all. We are loving the beautiful gable end to the alfresco what a magnificent feature, and space this will be for entertaining.





### HIGHTON

Another magnificent two storey taking shape, with brickwork almost complete this modern home is already showing some great features with PGH's Metallic 'Pewter' bricks-Wow! With James Hardie Axon cladding to the first floor with cypress posts this is all a match made in heaven. With those magnificent big windows this light filled home is going to impress!



### LETHBRIDGE

With Lock up complete and plaster underway this beautiful home is cruising along nicely! We love watching our clients start to get a feel for their new home and the magnificent spaces. What a space for the kids to grow up and enjoy the outdoors, country living is living your best life! With spotted gum flooring, pops of Gold and colour everywhere, this is one home that will be the perfect escape from life's busy pace!



### BATESFORD

In one of the most desired locations and land in short supply this beautiful home was the first new start to 2023! With lock up to begin soon this home will showcase the beautiful Manhattan Chelsea brick by PGH, complemented by James Hardie's Axon cladding. With a neutral colour scheme these clients will be putting their own flare on it in no time at all.



### WINCHELSEA

One of our most recent starts in this brand new estate, for our excited clients and their long wait. With site cut completed and plumbing and slab prep to begin shortly. We can't wait to show you the progress of this one, with some pops of colour and modern features this one will be sure to impress.



### WINCHELSEA

With site cut to begin shortly across the road from our most recent start. We are excited to see two Little Constructions signs up in this brand new estate. The trades will love these two close by!



# UPCOMING SITE STARTS.....

INVERLEIGH



BANNOCKBURN



BATESFORD



# Recent client Testimonials.....

We have recently received handover of our new home from Little Constructions - WOW would be an understatement!

From start to finish their team have been exceptional to deal with. We had always put off our building a new home as we had heard horror stories from friends and family - certainly not the case with Little Constructions. Absolute professionalism in all our dealings and delivered our dream home way within the time frames, which has exceeded our expectations. Could not be happier!

Thanks to the whole team! You guys are certainly all passionate about what you do - building Country homes for country people!

Katrina & Glenn

ANAKIE



# STAY CONNECTED.....

JOIN US ON SOCIAL MEDIA FOR REGULAR UPDATES

 Little Construction P/L

 Little\_constructions

 Little Constructions

 <http://www.houzz.com.au/pro/little-constructions/little-constructions>



YOU SHOULD BE ASKING YOURSELF, HOW CAN THIS NOT WORK? PEOPLE LOVE FREE STUFF

# ON SITE WITH PAUL....

## Meet Our valued Contractors...



**Company Name / Occupation:** Geelong Septic Tanks / Josh Gray

**Do you have a Nickname?** Cliffy

**Where were you born?** Geelong

**What is your earliest memory?** Playing in the sandpit

**Who is your most influential person so far?** Dom Gleeson (Footy coach)

**What was your first paying job?** Bagging and selling manure

**What is your relationship status?** Married

**Do you have any children?** Nellie (8years old) & Scout (5years old)

**Do you have any Siblings?** 2 older brothers and 2 younger sisters

**What is your definition of happiness?** Kids

**What is your favourite activity in your spare time?** Running or going to the footy

**What is your most embarrassing moment?** Doing trade profiles, haha

**What is your greatest fear?** Family being hurt

**What is your favourite song / band?** Grey street, Dave Matthews band

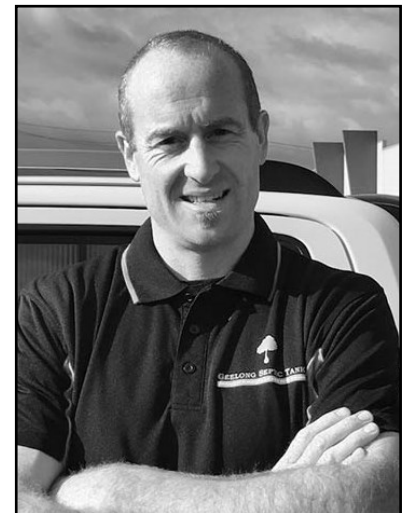
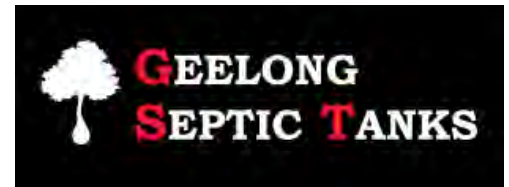
**What is your favourite food?** Spicy Food

**What would be your favourite body part?** Legs

**What do you think of Garden Gnomes?** Take them or leave them, Mum hated them!

**What Footy team do you barrack for?** Geelong Cats

**What is the best part about working for Little Cons?** Very organised and committed staff at Little Constructions.



*Josh Gray*

'Geelong Septic Tanks' is a third generation family owned and operated business that specializes in sewerage and waste water treatment.

It started over 50 years ago with father/son team Noel and Brian Gray. The foundations of the business were built on hard work ethics, quality workmanship and outstanding customer service.

In 2005, Brian's son Josh took over running the business. In this time Geelong Septic's has gone onto employ a great team of honest and committed employees. The fleet has also changed significantly in that time moving from using only the backhoe to the majority of the work now carried out by excavators, skid steers, Vermeer's and reliable Isuzu trucks.

Josh has continued to build on and expand the business whilst also maintaining hard work ethics, quality workmanship and outstanding customer service.



[www.geelongseptic tanks.com.au](http://www.geelongseptic tanks.com.au)



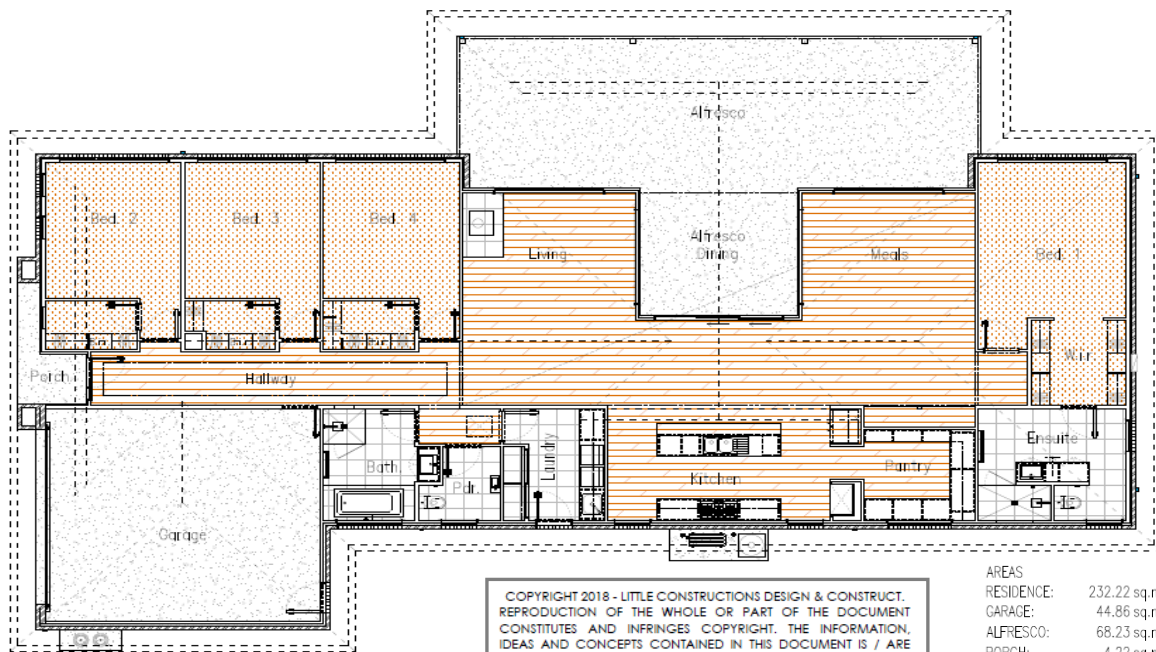


# FEATURED HOME DESIGN.....

One of our most recent handovers in a location you could only dream of, with 360 degree views as far as the eye can see. This simplified country living still holds so much wow factor when you work with not only your materials but the beautiful surrounding around you. Sometimes you don't need those flash upgrades to accomplish something beautiful! Wanting a design that takes in the views from all rooms this design has very much achieved this. It caters for the larger family and is an entertainers dream for all weather with a large Alfresco to help capture the views and bring outdoor living in. It caters to each family member with a separate parents retreat to one end of the home.

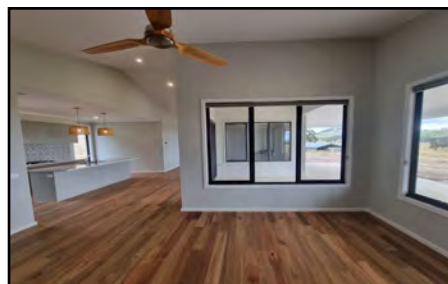
Wake up each day with your home functioning to your lifestyle and working to your needs!

Come in discuss your dream home, obligation free with our passionate team.



COPYRIGHT 2018 - LITTLE CONSTRUCTIONS DESIGN & CONSTRUCT. REPRODUCTION OF THE WHOLE OR PART OF THE DOCUMENT CONSTITUTES AND INFRINGES COPYRIGHT. THE INFORMATION, IDEAS AND CONCEPTS CONTAINED IN THIS DOCUMENT IS / ARE CONFIDENTIAL. THE RECIPIENT(S) OF THIS DOCUMENT IS / ARE PROHIBITED FROM DISCLOSING SUCH INFORMATION IDEAS AND CONCEPTS TO ANY PERSON WITHOUT PRIOR WRITTEN CONSENT OF THE COPYRIGHT HOLDER.

AREAS		
RESIDENCE:	232.22 sq.m	25.00 sqrs
GARAGE:	44.86 sq.m	4.83 sqrs
ALFRESCO:	68.23 sq.m	7.34 sqrs
PORCH:	4.22 sq.m	0.45 sqrs
TOTAL:	349.53 sq.m	37.62 sqrs



*'Country Homes For Country People'*

# Top design trends for 2023

Each new year brings new trends and design ideas for the building industry. Our homes are an extension of ourselves. They accommodate our particular habits, rituals and strengths. Living in the wrong home or not designing it to your needs can suppress some of the natural enthusiasms and rhythms we feel for everyday life.

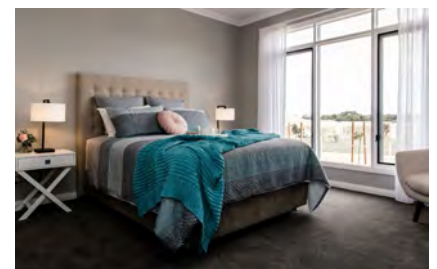
Little constructions has you covered with all the new trends heading well into the new year. Designs that fill rooms with natural light, natural colours and multifunctional rooms are definitely things to consider. This year bigger doesn't mean better!

Some of our most popular styles:

**Country** - Country is a substyle of the classic look drawing inspiration from traditional barn, cabin and farmhouse's reflecting their rural surroundings. The Classic style includes a neutral palette that honors traditional architecture but always maintaining a warm, welcoming and homely environment.



**Hamptons** - With sun-drenched interiors where light and movement flow easily they are a perfect entertainer. Also a substyle of the Classic Look the Hamptons represents elegant but relaxed coastal living. It's interiors are light and fresh and usually begins with classic architectural design features which include timber paneling, high coffered or pitched ceilings with exposed beams and timber floors. This will always be a popular style and will be around for years to come.



**Scandinavian** - A substyle of Contemporary will suit those that prefer to keep things simple and uncluttered but is still comfortable and welcoming. It is a modern style that is constantly evolving. Scandi is all about combining beauty, simplicity and functionality using natural earthy finishes and timbers.

