

# SUMMER NEWSLETTER

LITTLE  
**constructions**  
DESIGN AND CONSTRUCT



## IN THIS ISSUE

- Keep an eye out 2
- Recent Client Testimonials 3
- Highlighted Projects 4- 5
- Upcoming / Stay Connected 6
- Onsite with Paul 7
- Featured Home Design 8
- Colourbond (NEW Colours) 9
- 2022 in Review / Office Christmas opening hours 10

*“Country Homes  
For  
Country People”*



All Little Constructions newsletters are available  
for download on our website:  
[www.littleconstructions.com.au](http://www.littleconstructions.com.au)



## Get In Touch With The Team

If you're ready to build the acreage home of your dreams, get in touch with the team at Little Constructions today. We're ready to bring your country home to life.

Contact Us



 **Keep an eye out at a bus stop near you....** 

Contact us today for a FREE hard copy of our Product Book



Visit our website to request a copy  
Or  
Get in contact with our friendly team

**Office:** 03)5298 3413  
**(New Home Sales) :** 0478 686 985

*'Country Homes For Country People'*

# Recent client Testimonials.....



We were lucky enough to have the team at Little Constructions build our new home. From start to finish we had full confidence that we'd made the right decision. The whole team were an absolute pleasure to work with and we felt like we were more than just another customer getting a house built. The teams ability to be honest, flexible and transparent gave us total piece of mind that we were going to walk into a brilliant home in the time frame and budget we were shooting for.

Even with the additional challenges that the building industry has been facing Mark, Paul and the rest of the crew still kept delivering at the key stages of the build.

This was our first build and we couldn't have been more happy with how the process and most importantly the house all came together.

Thanks again to the whole family at Little Constructions, you're all guns!

- Pat and Niamh

(Batesford)



The experience building our home with Little Constructions was first class! From the initial design concept to final handover, the team were professional, responsive and able to suggest solutions to suit our requirements within budget.

Mark's building experience gave us the confidence that our family home would be delivered to our expectation. Their close knit and friendly team made us always feel apart of the journey—thankyou Paul, Edin, Kasey and Leesa!

We loved using a local company. Paul was an excellent site supervisor, and very accommodating of our requests.

We'd be very happy to recommend Little Constructions to anyone considering building in Geelong and surrounds!

Thankyou Team Little!

- Seth and Monica

(Highton)



# HIGHLIGHTED PROJECTS...



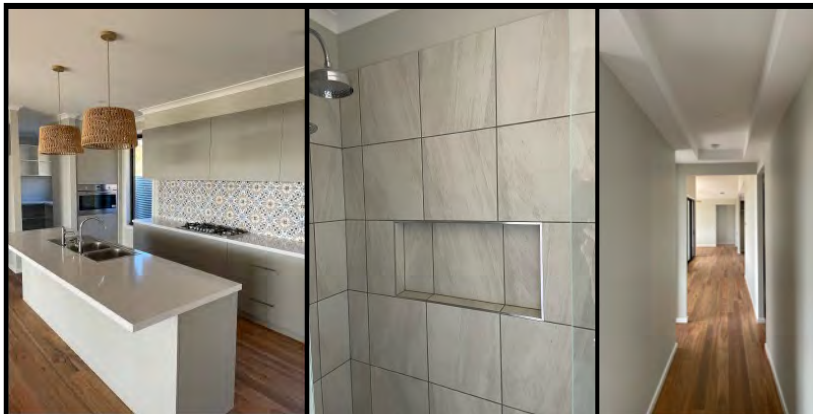
## POINT LONSDALE

With handover just recent our lucky clients can now call this coastal gem `home`! With inspiration taken from it's beautiful surroundings the features of this home up close are endless from carefully selected tiles to magnificent Timber doors and windows and a colour scheme that creates a real sense of calm. The team onsite have done an amazing job bringing this home to life!



## HIGHTON

We don't do too many two storey's but when we do;Wow! Another recent handover saw it's excited new owners moving in well before Christmas! With features at every turn this beautiful new home will be the place for many great memories to be made. Did you see that Dining room - seating 20 guests easily what a magnificent space. With a recent addition to their beautiful family and new home all before Christmas this year will be hard to top!



## ANAKIE

With 360degree views perched on the hill this home has taken its place within its surroundings beautifully. With final touches been made this amazing home will be up and full of life very soon! With a neutral interior with some magnificent features our clients will have a blast making this space their own. This home has so many open light filled spaces with high ceilings and windows our clients and team have nailed the design / location perfectly!



## ST ALBANS PARK

With finishing touches been made and fit off well underway handover of our 2 unit development is not far away. With some fresh curb appeal and a great use of a soft neutral colour scheme, it will be the ideal location for someone not wanting our usual sprawling acreage spaces. With a sense of home these will appeal to many! With easy access to Geelong and the Bellarine Peninsula a low maintenance convenient lifestyle will have some great appeal to its potential new owners.



### LARA

With the upper brickwork well underway the grandness of this home is really beginning to take shape. This home will showcase some amazing features internally and externally, we can't wait to show you the progress along the way. Our clients have everything they need including the first floor which has an amazing master bedroom, Ensuite / WIR and retreat that you could only dream of!



### GHERANG

Another Day another beautiful remote location for our team. With fix out to begin and ready for the painter the best part is about to start! With hardwood Spotted gum flooring to come and some beautiful features and colours this home will be one to watch. With light filled rooms and an amazing fireplace bringing the hub of the home together, our clients will not want to leave!



### TEESDALE

With Lock up almost complete and getting ready for plaster our newest acreage project is cruising along nicely! With the beautiful Manhattan 'Chelsea' bricks complimented with the Linea cladding it's soft welcoming exterior will be one our clients will look forward to coming home to each day, been the perfect escape from life's busy pace!



### HIGHTON

With frame complete on one of our newest starts we love watching our clients finally able to start getting a feel for their new home. With amazing views, parks, trails and cafes/shops close by its no wonder this is such a sought after location. With some amazing modern features and schemes this is one to watch, we can't wait to show you the progress along the way. Stay tuned!



### LETHBRIDGE

With setout complete and slab prep to begin soon this very excited family will be choosing bedrooms and walking through in no time at all. This one is definitely one to watch and has been so much fun for our team putting together! Keep an eye out for their fabulous Ensuite and amazing splashes of colour!

# UPCOMING SITE STARTS.....

BATESFORD



WINCHELSEA



WINCHELSEA



With the silly Season upon us it is all hands on deck!!  
Thanks Gillespie family we loved seeing your elf Sullivan out helping clear the sites ready to build your Dream home!



# STAY CONNECTED.....

JOIN US ON SOCIAL MEDIA FOR REGULAR UPDATES

Little Construction P/L

Little\_constructions

Little Constructions

<http://www.houzz.com.au/pro/little-constructions/>  
little-constructions



# ON SITE WITH PAUL....



## Meet Our Contractors....

**Company Name / Occupation:** Fly Screening Solutions

**Do you have a Nickname?** Too many to list.... Both good and bad!!

**Where were you born?** Bendigo

**What is your earliest memory?** Running to fast down a hill at school and not keeping my feet

**Who is your most influential person so far?** Prep Teacher

**What was your first paying job?** Mrs Fields Bakehouse

**What is your relationship status?** Married

**Do you have any children?** 3 children - aged 17, 15 & 12

**Do you have any Siblings?** 5 siblings –3 older & 2 younger

**What is your definition of happiness?** Sunshine, Beer, family & friends

**What is your favourite activity in your spare time?** Hanging out with Family & Friends

**What is your most embarrassing moment?** Accidentally lighting my hair on fire at a wedding while leaning over a candle

**What is your greatest fear?** Heights

**What is your favourite song / band?** Whitney Houston-I want to dance with somebody

**What is your favourite food?** Anything that has been cooked for me

**What would be your favourite body part?** Eyes

**What do you think of Garden Gnomes?** They should stay on the shelf and out of my garden

**What Footy team do you barrack for?** North Melbourne

**What is the best part about working for Little Cons?** Seeing the beautiful homes that Little Constructions build for their clients..... Oh and the excitement of the fog cannons!



*'Your local insect & security screen experts!'*

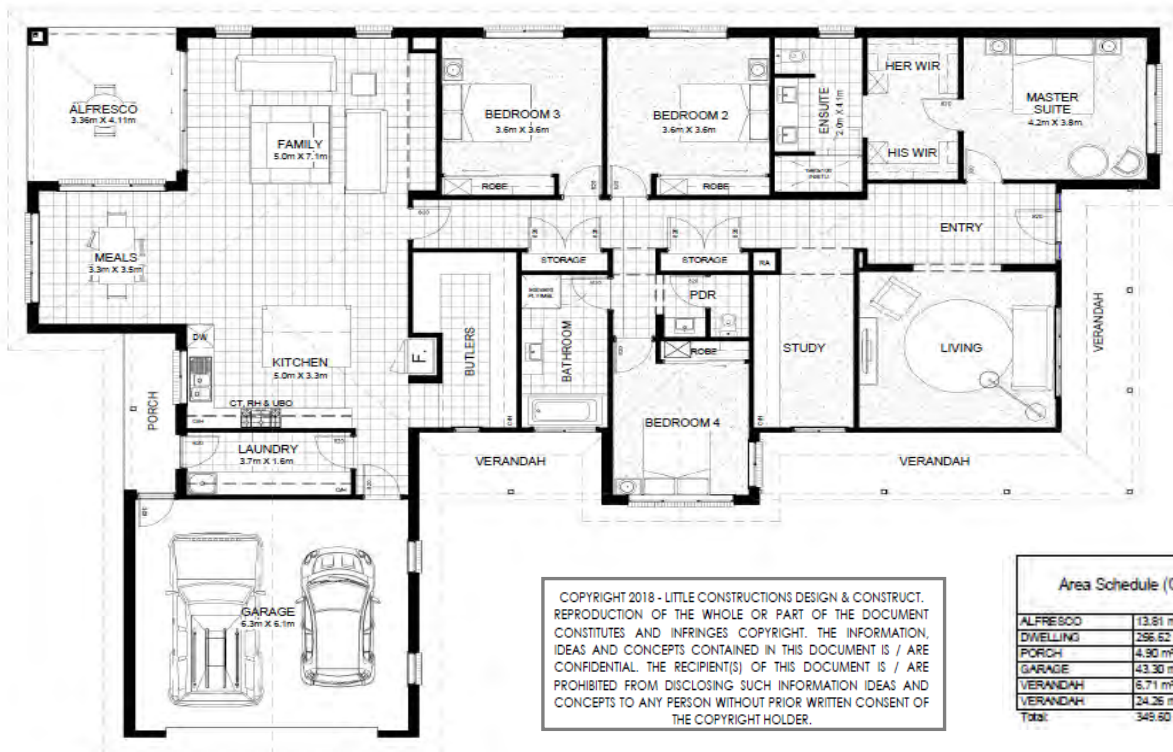
[www.flyscreeningsolutions.com.au](http://www.flyscreeningsolutions.com.au)

# FEATURED HOME DESIGN.....

## **Belle Vue 38**

Our Belle Vue 38 has still been the go to house for inspiration and design throughout 2022! It has nearly been a year since we closed our beautiful display in Moriac and handed it over to its lucky new owners, but it seems to still be hot in everyone's mind. This design allows clients to put their own flare or replicate our version of Edwardian style with a Contemporary twist!

This design certainly has enhanced the sense of family and a sense of place within our clients!



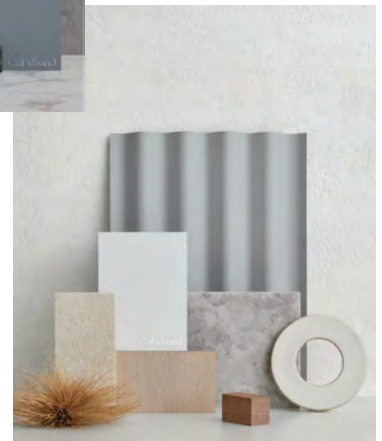
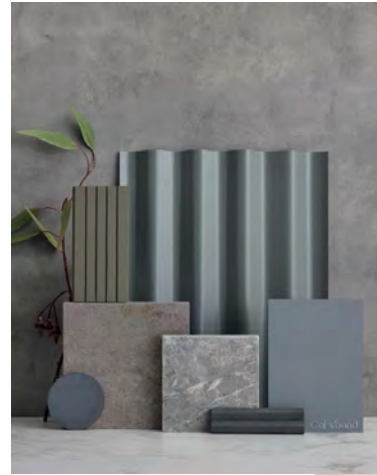
*'Country Homes For Country People'*



# Colorbond®

Tested and refined for over 50 years in some of Australia's most challenging environments. Inspired by the natural colours and forms of its most unique landscapes. Lived in and relied on by generations of Australians past and future!

With new colours added the 22 core range and 6 premium Matt finish colours gives you endless opportunities to compliment and enhance your homes design.



Earning its position an iconic Australian brand - Colourbond are manufactured using 100% Australian made steel from Bluescope.

Classic finish				
Dover White™ Classic finish SA = 0.28	Surfmist™ Classic finish SA = 0.33	Evening Haze™ Classic finish SA = 0.41		
Southerly™ Classic finish SA = 0.40	Dune™ Classic finish SA = 0.48	Paperbark™ Classic finish SA = 0.43	Classic Cream™ Classic finish SA = 0.33	
Shale Grey™ Classic finish SA = 0.44	Bluemum™ Classic finish SA = 0.57	Windspray™ Classic finish SA = 0.60	Gully™ Classic finish SA = 0.54	Jasper™ Classic finish SA = 0.47
Wallaby™ Classic finish SA = 0.64	Basalt™ Classic finish SA = 0.67	Woodland Grey™ Classic finish SA = 0.70	Monument™ Classic finish SA = 0.73	Night Sky™ Classic finish SA = 0.95
Ironstone™ Classic finish SA = 0.73	Deep Ocean™ Classic finish SA = 0.74	Cottage Green™ Classic finish SA = 0.73	Pale Eucalypt™ Classic finish SA = 0.60	Manor Red™ Classic finish SA = 0.70

Matt finish		
Bluemum™ Matt finish SA = 0.59	Shale Grey™ Matt finish SA = 0.46	Surfmist™ Matt finish SA = 0.35
Monument™ Matt finish SA = 0.79	Basalt™ Matt finish SA = 0.71	Dune™ Matt finish SA = 0.48

Visit: [www.colorbond.com](http://www.colorbond.com)

Brochures: <https://colorbond.com/sites/default/files/2022-08/COLORBOND%20steel%20-%20Inspired%20Homes%20Brochure.pdf>

Or Contact the Little Constructions Office for more information, Brochures and samples



# 2022 A YEAR IN REVIEW.....

Closing the books as another year comes to an end, it is such a great time to sit back reflect and feel grateful for the amazing team we have around us. The impact that the last few years has had on the Construction industry is enormous and even for us taking the time to realise just how much hard work and dedication has gone into this year is even hard for us all to comprehend.

Over the years Australia has become more reliant on importing building materials and equipment which in turn has resulted in supply chain disruptions and escalating building costs for a lot of builders, having major impacts on their projects. The voice of the Master Builders alone has had a huge impact on leading the industry's economic recovery. As his role as President Mark this year was able to attend Australia's first post Covid building and construction industry international Research Project to help identify opportunities and the best practices to support our industry. Understanding the impact globally and how these overseas counterparts in the industry are solving some of the issues faced by Victoria at the moment, this was not only valuable for us as a small business but for the whole industry in general.

We would especially like to thank the unbelievable support we get from our clients and thank you all for allowing us to build in some of the most spectacular locations around our area - we do believe we have the best clients ever and the relationships and gratitude is so greatly appreciated by us all as a team.

We hope you all have a safe Christmas and New Year, enjoying some well deserved time with family and friends.

With another busy year ahead and the schedule filling we can't wait to get back into building your dream homes!

We look forward to seeing you all in 2023!

-Mark, Leesa, Paul, Kasey, Edin, Alpha and all the team at Little Constructions

